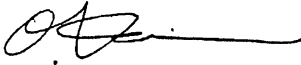




SERVICE BULLETIN

PUBLICATION GROUP, AFTER SALES SERVICE DEP.
MITSUBISHI MOTOR SALES EUROPE BV

SERVICE BULLETIN		No.: ESB-97E22-502e	
		Date: 1999-07-15	<Model> (EC, EXP) CARISMA
Subject: CORRECTION TO TRANSMISSION GEAR RATIOS AND TO TIGHTENING TORQUES			<M/Y> 96-10
Group: MANUAL TRANSAXLE			
CORRECTION		 O. Kai - E.V.P. & G.M. After Sales Service Dept.	
1. Description: This Service Bulletin informs you of correction to the transmission gear ratios and to tightening torques of the drain plug and the filler / level plug.			
2. Applicable Manuals:			
Manual	Pub. No.	Language	Page(s)
TRANSMISSION Workshop Manual	PWEE9508	(English)	22A-1-1,
	PWES9509	(Spanish)	22A-3-1,
	PWEF9510	(French)	22A-3-2a
	PWEG9511	(German)	
	PWED9512	(Dutch)	
	PWEW9513	(Swedish)	
	PWEI9508-b	(Italian)	
3. Details:			

1. SPECIFICATIONS

GENERAL SPECIFICATIONS

Items		Specifications	
Model		F5MR1, F5MR2	F5MR3
Type		Manual, 5-speed, front wheel drive	Manual, 5-speed, front wheel drive
Gear ratio	1st	3.363	<Correct>
	2nd	2.074 ← 2.047	<Incorrect>
	3rd	1.321	<Correct>
	4th	0.967 ← 0.966	<Incorrect>
	5th	0.795 ← 0.794	<Incorrect>
	Reverse	3.550 ← 3.545	<Incorrect>
Final reduction ratio		4.067 ← 4.066	3.294 ← 3.437

<Incorrect>

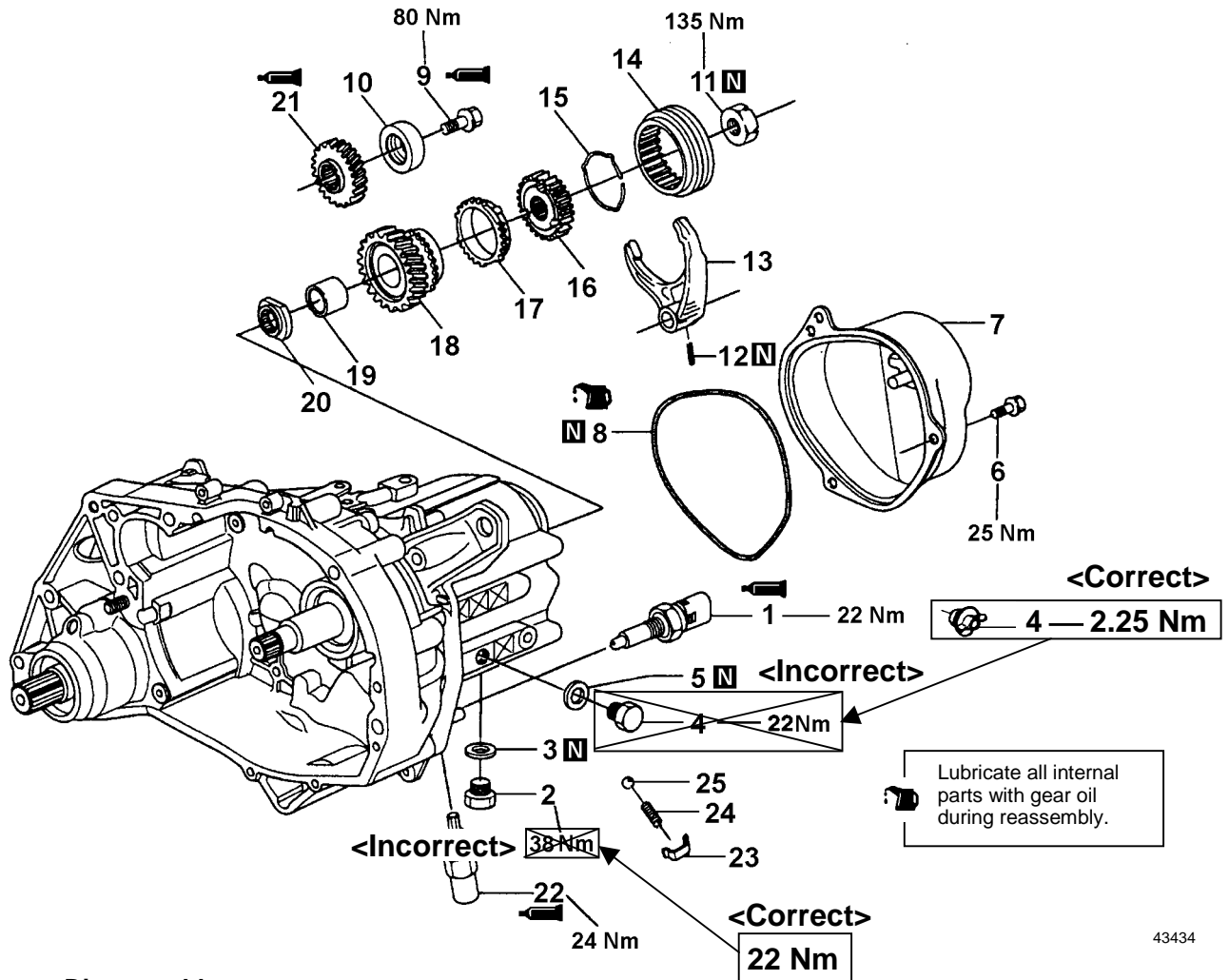
TORQUE SPECIFICATIONS

Items	Specifications (Nm)
Bearing housing bolts	25
Input shaft lock nut	135
Output shaft bolt	80
Cover bolts	25
Locating pin	24
Back-up lamp switch	22 <Correct>
Drain plug	38 ← 22
Filler/level plug	22 ← 2.25 <Incorrect>
Sealing plugs	25
Guide bushing bolts <F5MR3>	25
Differential nut <F5MR3>	130

3. TRANSMISSION

xxx

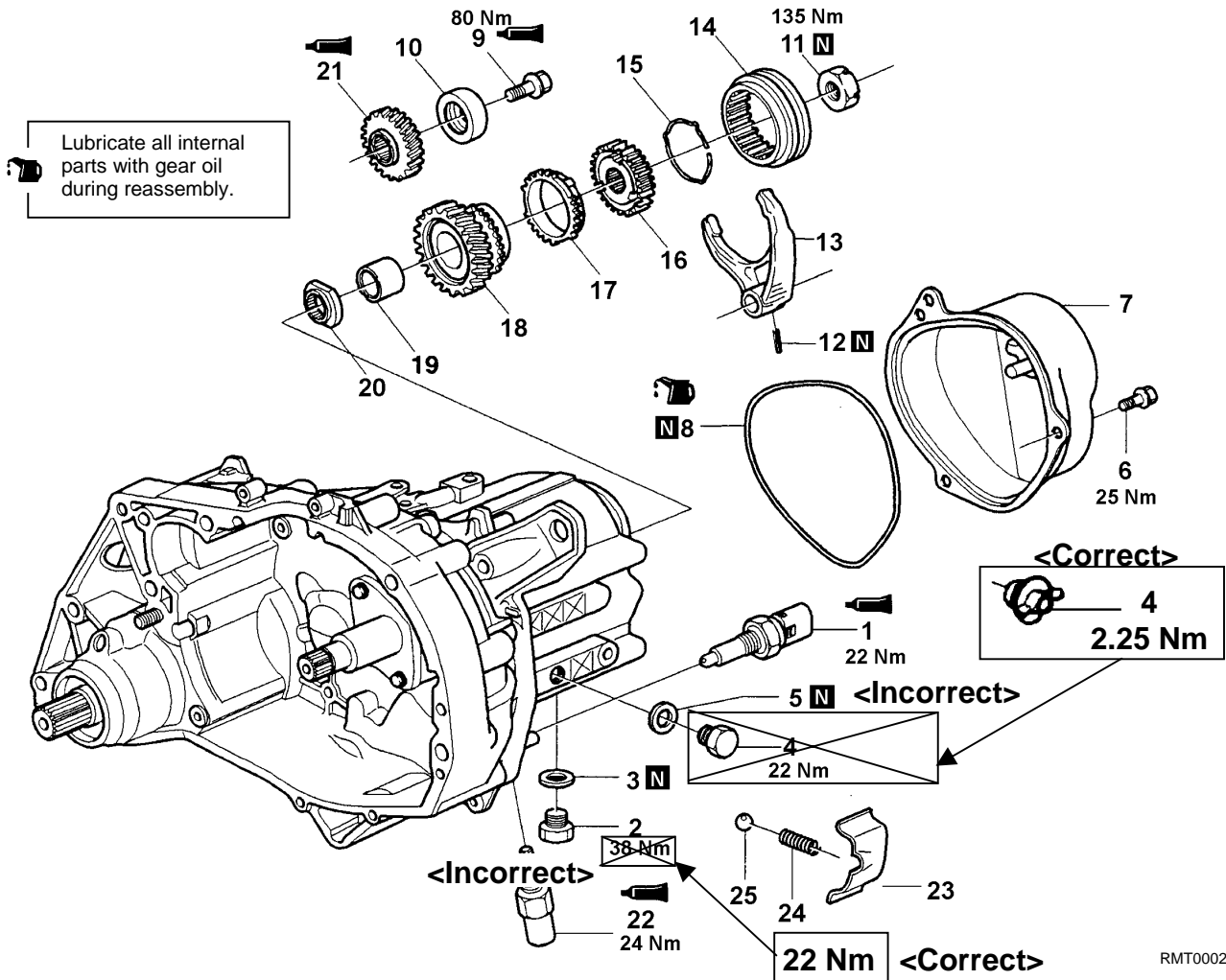
DISASSEMBLY AND REASSEMBLY <F5MR1, F5MR2>



Disassembly steps

- | | | | | |
|---------|--------------------------|-----|-----|-------------------------|
| ▶Z◀ | 1. Back-up lamp switch | ◀C▶ | ▶V◀ | 14. Synchronizer sleeve |
| | 2. Drain plug | ◀D▶ | ▶V◀ | 15. Synchronizer spring |
| | 3. Gasket | ◀D▶ | ▶V◀ | 16. Synchronizer hub |
| | 4. Filler plug | ◀D▶ | ▶T◀ | 17. Synchronizer ring |
| | 5. Gasket | ◀D▶ | ▶T◀ | 18. 5th speed gear |
| ◀A▶ ▶Y◀ | 6. Bolt | ◀D▶ | ▶T◀ | 19. Bearing sleeve |
| ◀A▶ ▶Y◀ | 7. Rear cover | ◀D▶ | ▶T◀ | 20. Retaining ring |
| ◀A▶ ▶Y◀ | 8. O-ring | ◀E▶ | ▶U◀ | 21. 5th gear wheel |
| ◀B▶ ▶W◀ | 9. Bolt | ◀F▶ | ▶S◀ | 22. Locating pin |
| ◀B▶ ▶W◀ | 10. Shim | ◀G▶ | ▶R◀ | 23. Cover plate |
| ◀B▶ ▶W◀ | 11. Lock nut | ◀G▶ | ▶R◀ | 24. Poppet spring |
| ◀C▶ ▶X◀ | 12. Spring pin | ◀G▶ | ▶R◀ | 25. Poppet ball |
| ◀C▶ ▶V◀ | 13. 5th speed shift fork | | | |

DISASSEMBLY AND REASSEMBLY <F5MR3>



RMT0002

Disassembly steps

- | | | | | |
|---------|--------------------------|-----|-----|-------------------------|
| ▶Z◀ | 1. Back-up lamp switch | ◀C▶ | ▶V◀ | 14. Synchronizer sleeve |
| | 2. Drain plug | ◀D▶ | ▶V◀ | 15. Synchronizer spring |
| | 3. Gasket | ◀D▶ | ▶V◀ | 16. Synchronizer hub |
| | 4. Filler plug | ◀D▶ | ▶T◀ | 17. Synchronizer ring |
| | 5. Gasket | ◀D▶ | ▶T◀ | 18. 5th speed gear |
| ◀A▶ ▶Y◀ | 6. Bolt | ◀D▶ | ▶T◀ | 19. Bearing sleeve |
| ◀A▶ ▶Y◀ | 7. Rear cover | ◀D▶ | ▶T◀ | 20. Retaining ring |
| ◀B▶ ▶W◀ | 8. O-ring | ◀E▶ | ▶U◀ | 21. 5th gear wheel |
| ◀B▶ ▶W◀ | 9. Bolt | ◀F▶ | ▶S◀ | 22. Locating pin |
| ◀B▶ ▶W◀ | 10. Shim | ◀G▶ | ▶R◀ | 23. Cover plate |
| ◀B▶ ▶W◀ | 11. Lock nut | ◀G▶ | ▶R◀ | 24. Poppet spring |
| ◀C▶ ▶X◀ | 12. Spring pin | | | 25. Poppet ball |
| ◀C▶ ▶V◀ | 13. 5th speed shift fork | | | |