
REAR SUSPENSION

REAR SUSPENSION

CONTENTS

34109000107

GENERAL INFORMATION	2	Rear Wheel Alignment	3
SERVICE SPECIFICATIONS	2	REAR SUSPENSION ASSEMBLY	4
ON-VEHICLE SERVICE	3		



GENERAL INFORMATION

34100010123

The leaf spring type of rear suspension has been adopted. The leaf spring is secured to the rear axle housing by U-bolts, so that the vibration and

noise transmitted to the body during off-road driving are reduced by the bump stopper. The shock absorbers have a bias arrangement.

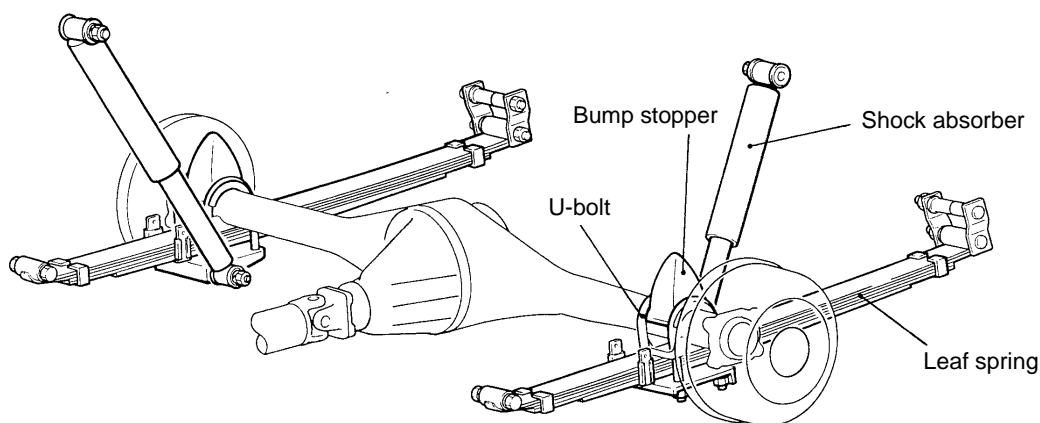
LEAF SPRING

Items	2WD	4WD
Number of leaf springs	4 [5]	5 [6]
Straight span mm	1200	1200

NOTE

[] indicates option.

CONSTRUCTION DIAGRAM



A12V0010

SERVICE SPECIFICATIONS

34100030129

Items	Standard value
Toe-in mm	0 (non adjustable)
Camber	0° (non adjustable)
Thrust angle	0° (non adjustable)

ON-VEHICLE SERVICE

34101100034

REAR WHEEL ALIGNMENT

The rear suspension assembly must be free of worn, loose or damaged parts prior to measurement of rear wheel alignment.

Standard value:**Toe-in 0 mm****Camber 0°****NOTE**

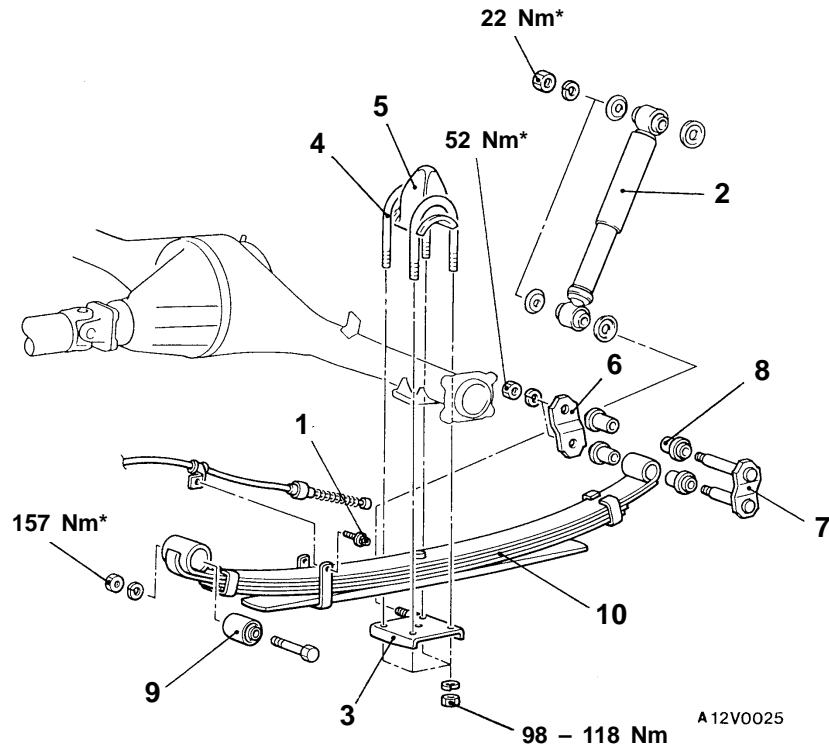
Toe-in and camber are set at the factory and cannot be adjusted. If toe-in or camber is not within the standard value, check and replace bent or damaged parts.

REAR SUSPENSION ASSEMBLY

REMOVAL AND INSTALLATION

Pre-removal Operation

- Support the axle housing with a jack

**Removal steps**

1. Parking brake cable attaching bolt
2. Shock absorber
3. U-bolt seat
4. U-bolt
5. Bump stopper
6. Shackle plate
7. Shackle assembly
8. Rubber bushings

9. Bushing
10. Rear spring

Caution

* Indicates parts which should be temporarily tightened, and then fully tightened with the vehicles on the ground in the unladen condition.